

CLASS-A

# ALLEGRO BREEZE



TIFFIN

## What's New Summary - Allegro Breeze

### WHAT'S NEW

---

- New Waypoint Fabric Suites
- Two New Ultraleather Colors (Trail & Taupe Hills)
- Two New Cabinetry Options (Sandstone & Shadow Maple)
- Sea Grass Luxury Vinyl Tile
- Generation 7 Paint Schemes
- 50th Anniversary Exterior Paint Color Package
- 50th Anniversary Decal
- Foot Ledge in Shower
- Updated Dinette Boothe Seating for Lift Up Seat Storage Access
- New Wi-Fi Booster
- Cellular Signal Booster Now Available
- Updated Cabinetry
- Dinette Computer Workstation with Lift TV Now Available
- Updated Entry Step Cover
- Updated Furniture Styling
- Girard® Slideout Toppers
- New 12.5' Lippert™ On-The-Go™ Ladder
- Residential Refrigerator Now Standard
- 2,000-Watt Inverter Now Standard
- Chrome Dryer Vents
- Truma AquaGo™ Comfort Instant Water Heater Now Controllable Through Spyder System Control Panels

### NO LONGER AVAILABLE

---

- 31 BR Floorplan
- Dior II, Cafe III, & Mist III Fabric Suites
- Belgian and Cocoon Ultraleather Colors
- Natural Alder & Shadow Cabinetry
- Sand Castle Luxury Vinyl Tile
- Generation 6 Paint Schemes
- Gas/Electric Refrigerator
- 1,200-Watt Inverter
- Topless Toppers
- Molded-in Shower Seats
- Mobileye® Collision Avoidance System

Premium Paint System



Images shown are representations of paint layouts only and do not reflect all exterior features or options. Colors shown may slightly differ from colors on actual product.

Our eight-step, full-body paint system features premium grade paints sealed with three layers of clear coat with ultraviolet protection. An additional layer of high-performance film protects the front of the coach and select areas.



50TH ANNIVERSARY

NEW



G7 FIRE OPAL

NEW



G7 SILVER SAND

NEW



G7 FROSTED GRANITE

NEW



G7 ROCKY MOUNTAIN BROWN

NEW



G7 SPICED JAVA

NEW

# 33 BR

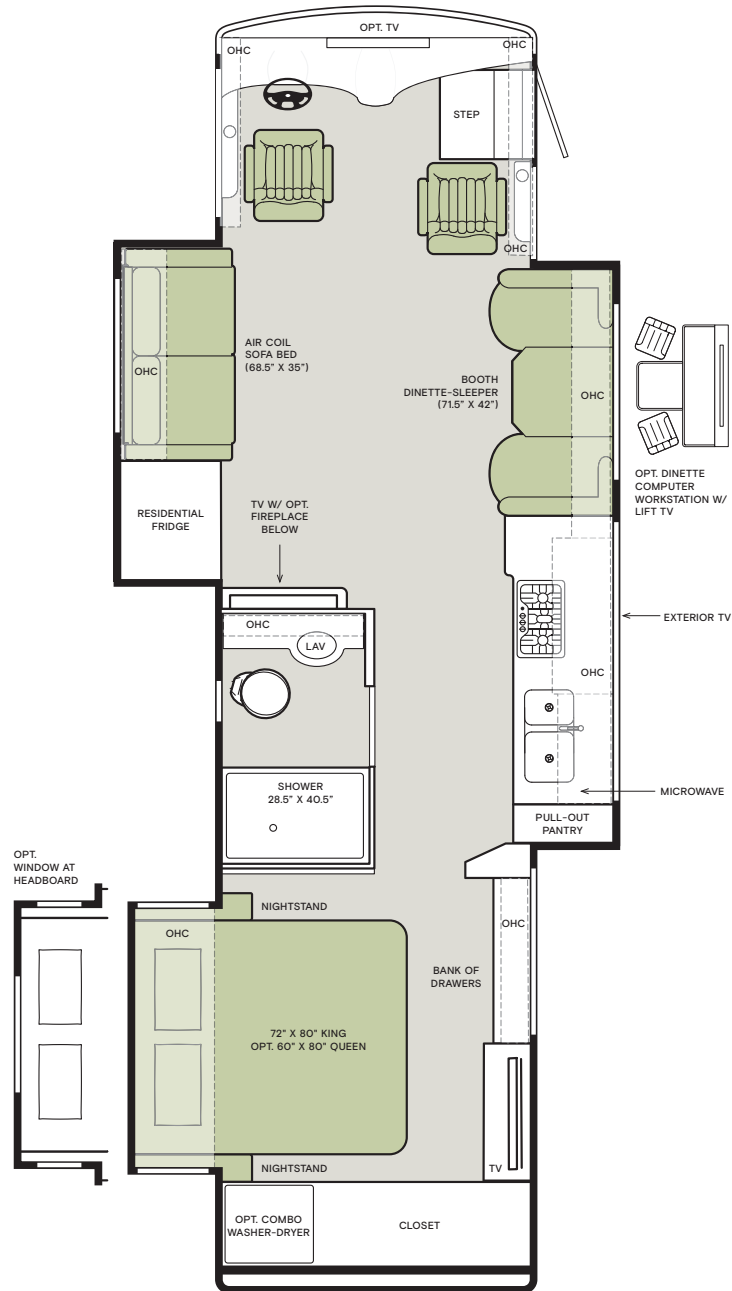


The design of every Allegro Breeze floor plan must meet four essential criteria: Maximum space, Optimal organization, Relaxation plus, and Elegant atmosphere. Tiffin's MORE Plans offer your family the most comfortable layout for life on the road.

If optional furniture combinations are selected, window locations may vary from diagram shown.

All options may not be available in every model. Because of progressive improvements and specifications, standard and optional equipment are subject to change without notice or obligation.

For a complete and up-to-date list of available options and specifications, visit [tiffinmotorhomes.com](http://tiffinmotorhomes.com).



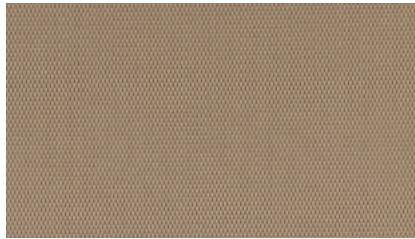
## Interior Décor

Make your experience on the road all your own. Express yourself by choosing the interior appointments such as cabinet finishes, flooring, and décor ensembles for every part of your motorhome. In the 2023 Allegro Breeze, you'll be able to travel in style no matter where you go.



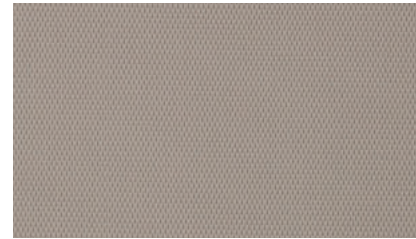
With high-performance functionality and ultimate comfort intertwined, Ultrafabrics® helps to create uniquely sensorial and colorful surroundings.

### FURNITURE



TRAIL

NEW



TAUPE HILL

NEW

### CABINETS & WINDOW TREATMENT



SANDSTONE

NEW



SHADOW

NEW

### FLOORING



SEA GRASS Matte Finish Tile

NEW

### WAYPOINT

NEW



BACKSPLASH



COUNTERTOP



LIVING ROOM



MASTER SUITE

Colors of interior decor options shown may vary from colors on actual product.

# Specifications, Features, and Options

KEY : S : Standard Feature | O : Optional Feature; Additional costs may apply | D : Dependent; Availability is dependent on selection of another option | - : Not Available

WEIGHTS AND MEASURES	33 BR
<b>DIMENSIONS</b>	
Overall Length (approx.) <sup>1</sup>	33' 2"
Overall Width <sup>1</sup>	95"
Overall Height	11' 8"
Minimum Garage Height	12'
Interior Height	78"
Interior Width	90"
Square Footage (approx.) <sup>2</sup>	295
Basement Storage (cubic feet, approx.)	94
Wheel Base	202"
<b>WEIGHT LIMITS</b>	
GAWR—Front (pounds)	9,500
GAWR—Rear (pounds)	16,000
GVWR (pounds)	25,500
Maximum Trailer Weight (pounds) <sup>3</sup>	5,000
Hitch Rating (pounds)	5,000
GCWR (pounds)	30,500
<b>CAPACITIES</b>	
Fuel Tank (gallons)	70
DEF Tank (gallons) <sup>4</sup>	10
Fresh Water (gallons)	70
Grey Water (gallons)	50
Black Water (gallons)	33
LPG Tank (gallons) <sup>5</sup>	20
<b>QUANTITIES</b>	
Sleeping Capacity <sup>6</sup>	4 to 5
Sleeping Areas <sup>6</sup>	2 to 3

- <sup>1</sup> The approximated coach width and length does not include side view mirrors and rear ladders.  
<sup>2</sup> Square footage was calculated with the slide-outs fully extended.  
<sup>3</sup> Maximum trailer weight is dependent on the loading and towing variables which include the GVWR, GAWR, and GCWR, as well as adequate trailer brakes.  
<sup>4</sup> Diesel Exhaust Fluid (DEF) is the active component used in Selective Catalytic Reduction (SCR) engines to reduce nitrogen oxide emissions by 90% to meet EPA standards.  
<sup>5</sup> LPG tank can only be filled to 80% capacity.  
<sup>6</sup> Dependent on furniture and dinette options.

CHASSIS		
<ul style="list-style-type: none"> <li>PowerGlide® Rear Engine Diesel Chassis</li> <li>Cummins® B6.7 340 HP Diesel Engine with 700 lb-ft Torque<sup>1</sup></li> <li>130-Amp Alternator</li> <li>Allison® 2500 MH 6-speed Automatic Transmission with Lock-up Torque Converter</li> <li>Aluminum Wheels</li> <li>Front and Rear 265/70R 19.5 Tires</li> </ul>	<ul style="list-style-type: none"> <li>(2) 12-Volt Flooded Lead-Acid Chassis Batteries</li> <li>Valid™ Air Leveling System</li> <li>ZF Independent Front Suspension</li> <li>Reyco® Granning® Air Ride Rear Suspension</li> <li>Custom Tuned Koni Shock Absorbers</li> <li>Rear Radiator</li> <li>Front Disc Brakes and Rear Drum Brakes</li> </ul>	<ul style="list-style-type: none"> <li>Full Air Brake System with Automatic Slack Adjusters</li> <li>Single Stage Variable Geometry Turbocharger (VGT) Engine Brake</li> <li>Manual Parking Brake</li> <li>Tire Pressure Monitoring</li> <li>Adaptive Cruise Control</li> <li>Automatic Traction Control</li> <li>Collision Mitigation with Forward Warning and Active Braking</li> <li>Electronic Stability Control</li> </ul>

<sup>1</sup> Peak horsepower achieved at 2,600 RPM. Peak torque achieved at 1,600 RPM.

ELECTRICAL		
<ul style="list-style-type: none"> <li>Liquid Propane (LP) Coach<sup>1</sup></li> <li>Spyder Controls Multiplex System Featuring App Compatibility</li> <li>6.0-Kilowatt Onan® Quiet Diesel Generator</li> <li>2,000-Watt Pure Sine Wave Inverter with Auto-Gen Start and Interior Remote Control<sup>2</sup></li> <li>Battery Slide-out Tray</li> <li>Extraordinaire™ Air Conditioning System</li> </ul>	<ul style="list-style-type: none"> <li>50-Amp Shore Power</li> <li>(2) 30,000-BTU Ducted Furnaces</li> <li>Prep for Satellite</li> <li>Auxiliary Solar Port</li> <li>Blu-ray™ Player</li> <li>Satellite Receiver</li> <li>Park Cable and Ground Satellite Hook-up</li> <li>HD Over-the-air Antenna<sup>3</sup></li> <li>12-Volt Breaker Panel</li> </ul>	<ul style="list-style-type: none"> <li>12-Volt Disconnect Switch</li> <li>Rotary Disconnect Switches for House Batteries, Chassis Batteries, and Inverter (GFCI) Outlets at Galley, Lavatories, and Sewer Bay</li> <li>110-Volt Exterior Receptacle</li> <li>Surge Guard® Transfer Switch</li> <li>USB Receptacles Throughout Coach</li> </ul>
<b>ELECTRICAL OPTIONS</b>		
House Batteries	(4) 6-Volt Flooded Lead-Acid House Batteries	S
	(4) 6-Volt Extended Cycle AGM House Batteries	O
Air Conditioning	(2) 13,500-BTU Low Profile Air Conditioners with Heat Pumps and Condensation Drains	S
	(1) 13,500-BTU Low Profile Air Conditioner and (1) 15,000-BTU Low Profile Air Conditioner with Heat Pump, both with Condensation Drains <sup>4</sup>	O
In-motion Satellite Dish <sup>5</sup>		O
Solar Panels	Prep for Solar Panels <sup>6</sup>	O
	(1) 200-Watt Solar Panel with (1) 30-Amp Controller	O
	(3) 200-Watt Solar Panels with (1) 30-Amp Controller	O
Cellular Signal Booster	<b>NEW</b>	O
Wi-Fi Booster	<b>UPDATED</b>	O

- <sup>1</sup> Propane is used to power the ducted furnaces, the water heater, and liquid propane cooktops.  
<sup>2</sup> Automatic generator start capabilities controlled through Spyder Controls Multiplex System. 1,200-Watt inverter no longer available.  
<sup>3</sup> Requires subscription.  
<sup>4</sup> 15,000-BTU air conditioner replaces front 13,500-BTU air conditioner.  
<sup>5</sup> High-definition programming is not available on a domed satellite antenna unless you subscribe to DISH Network®.  
<sup>6</sup> Includes docking ports for aftermarket solar panels.

PLUMBING		
<ul style="list-style-type: none"> <li>Water Heater Bypass System</li> <li>Truma AquaGo™ Comfort Instant Water Heater<sup>1</sup></li> <li>Aqua View Showermiser™</li> <li>Water Filter</li> <li>Water Pump Switch Access from Spyder System and Sewer Bay Board</li> </ul>	<ul style="list-style-type: none"> <li>Low-point Water Drain Lines</li> <li>Black Holding Tank Flush System</li> <li>Gravity Water Fill</li> <li>Heated Water and Holding Tank Compartment</li> <li>Tank Level Monitor System</li> </ul>	<ul style="list-style-type: none"> <li>Centralized Exterior Sewer Bay with Gravity Black and Grey Evacuation Ports</li> <li>Exterior Rinse Hose with Shower Head</li> <li>Sewer Bay Hand Sanitizer and Paper Towel Holders</li> </ul>

<sup>1</sup> Now controllable through the Truma control panel and the Spyder System control panels.

## Specifications, Features, and Options (Cont'd)

KEY : S : Standard Feature | O : Optional Feature; Additional costs may apply | D : Dependent; Availability is dependent on selection of another option | - : Not Available

EXTERIOR		
<ul style="list-style-type: none"> <li>Full-body Paint with (3) Layers of Clear Coat</li> <li>Seamless One-piece Gel-coat Fiberglass Molded Roof Cap</li> <li>One-piece Molded Gel-coat Fiberglass Front and Rear Caps</li> <li>Rust Protective Undercoating</li> <li>High Performance Protective Film on Front Cap and Select Areas</li> <li>(1) Girard® Side-mounted Powered Patio Awning with Integrated LED Lighting</li> <li>Girard® Powered Door Awning with Integrated LED Lighting</li> <li>Girard® Slide-out Toppers<sup>1</sup> <b>NEW</b></li> </ul>	<ul style="list-style-type: none"> <li>Steel Basement Construction</li> <li>Side-Swinging Exterior Storage Doors with Gas Shocks</li> <li>Lockable Chrome Handles on Compartment Doors</li> <li>Motion-sensor Lights in Cargo Bay</li> <li>120-Volt and 12-Volt Outlets Inside Cargo Bays</li> <li>Charcoal Carpet Cargo Walls</li> <li>Frameless, Single-Pane Windows</li> <li>Daytime Running Lights</li> <li>Docking Lights</li> <li>Exterior Patio Light</li> <li>Fog Lights</li> </ul>	<ul style="list-style-type: none"> <li>Chrome Power Heated Side-View Mirrors with Integrated Cameras</li> <li>Exterior TV with Soundbar</li> <li>Fast Charge USB ports within Exterior TV Compartment</li> <li>Manual Exterior TV Compartment Door</li> <li>Deadbolt Front Entrance Lock</li> <li>Entry Door Grab Handle</li> <li>Automatic Double Entry Step</li> <li>Front Door Entry System via Key Fob<sup>2</sup></li> <li>Mud Flaps</li> <li>Concealed Air Horn</li> <li>Limited Edition 50th Anniversary Decal <b>NEW</b></li> </ul>

EXTERIOR OPTION	33 BR
Lippert™ On The Go™ Ladder <sup>3</sup> <b>NEW</b>	O

- <sup>1</sup> Replaces Topless Toppers.  
<sup>2</sup> Entry system does not include exterior Spyder keypad.  
<sup>3</sup> All units will ship with a Lippert™ On-The-Go™ Prepped Receiver installed.

INTERIOR		
<ul style="list-style-type: none"> <li>Handcrafted Cabinet Fascias and Doors with Concealed Hinges</li> <li>(2) Flat-panel Televisions<sup>1</sup></li> <li>Solid Surface Galley Countertop</li> <li>Tile Slide-out Floors</li> <li>Handcrafted Slide-out Fascia</li> </ul>	<ul style="list-style-type: none"> <li>Soft Touch Vinyl Ceiling</li> <li>LED Lighting</li> <li>Carbon Monoxide Detector</li> <li>LPG Leak Detector</li> <li>Smoke Detector</li> </ul>	<ul style="list-style-type: none"> <li>Fire Extinguisher</li> <li>Solar and Privacy Shades</li> <li>Soft-closing Drawer Slides</li> <li>Powered Roof Vents</li> <li>Interior Grab Handle at Entry Door</li> </ul>

INTERIOR OPTIONS		33 BR
Treated Fabric Suites <sup>2</sup>	Waypoint <b>NEW</b>	S
Ultraleathers <sup>3</sup>	Trail <b>NEW</b>	O
	Taupe Hill <b>NEW</b>	O
	Sandstone <b>NEW</b>	O
Cabinetry Stain <sup>4</sup>	Shadow <b>NEW</b>	O
	Sea Grass Luxury Vinyl Tile <b>NEW</b>	S
Washer & Dryer	Prep for Washer and Dryer	S
	Combo Washer-Dryer	O
Central Vacuum System		O

- <sup>1</sup> Located in living area and bedroom.  
<sup>2</sup> Cafe III, Mist III, and Dior II are no longer available.  
<sup>3</sup> Belgian and Cocoon are no longer available.  
<sup>4</sup> Natural Alder and Shadow are no longer available.  
<sup>5</sup> Sand Castle is no longer available.

DRIVER'S COMPARTMENT		
<ul style="list-style-type: none"> <li>Ultraleather Power Driver and Passenger Seats</li> <li>Adjustable Seatbelt Brackets</li> <li>Powered Passenger Seat Footrest</li> <li>Tilt and Telescoping Steering Wheel with Integrated Controls</li> <li>Adjustable Accelerator and Brake Pedals</li> <li>Dual Dash Fans</li> <li>USB Dash Receptacles</li> <li>Storage Drawer in Dash</li> <li>12-Volt Dash Receptacle</li> <li>Backlit Dash Switches</li> <li>Contemporary Dash</li> </ul>	<ul style="list-style-type: none"> <li>Valid™ LCD Instrument Cluster Display with Integrated Leveling Controls</li> <li>Cupholders on Driver and Passenger Side</li> <li>Built-in Driver and Passenger Consoles with Rocker Switches</li> <li>Driver and Passenger Map Lights</li> <li>One-piece Panoramic Windshield</li> <li>Single-motor Intermittent Windshield Wipers</li> <li>Automatic LED Headlights</li> <li>Ceiling Mounted Speakers</li> <li>Stereo with AM &amp; FM Radio, CD Player, and Satellite Radio<sup>1</sup></li> <li>Side-view Cameras<sup>2</sup></li> </ul>	<ul style="list-style-type: none"> <li>Color Back-up Camera with Monitor</li> <li>Driver's Compartment Overhead Cabinets with Wooden Panel Doors</li> <li>Auxiliary Start Switch</li> <li>Manual Opening Driver Side Window</li> <li>Solid, Non-opening Passenger Side Window</li> <li>Powered Solar and Privacy Windshield Shade</li> <li>Manual Solar and Privacy Shades on Side Windows</li> <li>Carpeted Step Well with Composite Steps</li> <li>Manual Step Well Cover</li> </ul>

DRIVER'S COMPARTMENT OPTIONS	33 BR
In-dash Navigation System	O
Front Overhead TV	O

- <sup>1</sup> Subscription required for satellite radio.  
<sup>2</sup> Integrated within side-view mirrors and activated by turn signals.

DINETTE AND LIVING AREA		SLEEPS	33 BR
Driver Side Furniture	Ultraleather Air Coil Sofa Bed (68.5" x 35") <sup>1</sup>	2	S
	Mounted Flat-panel TV <sup>2</sup>	-	D
	Fireplace	-	O
Passenger Side Furniture	Ultraleather Booth Dinette-Sleeper (71.5" x 42") <sup>3</sup> <b>UPDATED</b>	2	S
	Dinette Computer Workstation with Lift TV <sup>4</sup> <b>UPDATED</b>	O	O
	Overhead Dinette Cabinets <sup>5</sup>	-	D

- <sup>1</sup> Piece of furniture converts to 72" x 52" sleeping area and has internal pump.  
<sup>2</sup> Standard with Ultraleather Booth Dinette/Sleeper. Not available with Dinette Computer Workstation with Lift TV.  
<sup>3</sup> Piece of furniture converts to 69" x 42" sleeping area. Now with lift-up seat storage access. Includes forward facing seat belts.  
<sup>4</sup> The printer bump-out was removed for more leg room. The keyboard and printer trays have been converted to a drawer and a fixed shelf to maximize storage.  
<sup>5</sup> Not available when lift TV is optioned.

KITCHEN		
<ul style="list-style-type: none"> <li>12-Cubic Foot Stainless Steel Residential Refrigerator<sup>1</sup></li> <li>Stainless Steel Convection Microwave with Exterior Venting</li> <li>Three-Burner Liquid Propane Cooktop</li> </ul>	<ul style="list-style-type: none"> <li>Double Bowl Kitchen Sink with Single Lever Faucet and Pull-down Sprayer</li> <li>Panoramic Galley Window</li> <li>LED Countertop Lighting</li> </ul>	<ul style="list-style-type: none"> <li>Full Tile Backsplash</li> <li>Solid Surface Galley Countertop, Sink, and Cooktop Cover</li> </ul>

- <sup>1</sup> Refrigerator volume is approximated.

BEDROOM		
<ul style="list-style-type: none"> <li>Under Bed Storage</li> <li>Bedside Windows</li> <li>Bed Comforter with Throw Pillows</li> </ul>	<ul style="list-style-type: none"> <li>Strategically Placed, Handcrafted Privacy Door</li> <li>Nightstand with Hardwood Finished Top</li> </ul>	<ul style="list-style-type: none"> <li>Mounted Flat-panel TV</li> <li>Centralized Entertainment Center<sup>1</sup></li> <li>Floor-to-ceiling Closet Space</li> </ul>
BEDROOM OPTIONS		33 BR
Mattress	Memory Foam King Mattress (72" x 80")	S
	Memory Foam Queen Mattress (60" x 80")	O
Bed Slide	Overhead Cabinet with Headboard	S
	Window at Head of Bed <sup>2</sup>	O

- <sup>1</sup> Houses Blu-ray™ player, satellite receiver, and cable TV hook-up.  
<sup>2</sup> Window option removes overhead cabinets.

BATHROOM		
<ul style="list-style-type: none"> <li>(1) Bathroom</li> <li>(1) Porcelain Master Bathroom Sink</li> <li>Solid Surface Lavatory Top</li> <li>One-Piece Molded Fiberglass Shower (28.5" x 40.5")<sup>1</sup> <b>UPDATED</b></li> </ul>	<ul style="list-style-type: none"> <li>Handheld Shower Head with Slide Bar</li> <li>Shower Skylight</li> <li>(1) Gravity Flush Toilet</li> <li>Towel and Toilet Paper Holders</li> </ul>	<ul style="list-style-type: none"> <li>Mirrored Medicine Cabinet</li> <li>Roof Vent Fan</li> </ul>

<sup>1</sup> Added foot ledge and removed molded-in shower seats to allow for more room.

1

YEAR OR 12,000 MILES  
LIMITED WARRANTY

5

YEARS OR 50,000 MILES  
DELAMINATION  
LIMITED WARRANTY

10

YEARS OR 50,000 MILES  
CONSTRUCTION  
LIMITED WARRANTY

1

YEAR COACH  
ROADSIDE SERVICE

∞

ONGOING  
CUSTOMER SUPPORT

FOR PARTS & SERVICE CALL 256.356.0261 OR VISIT [TIFFINMOTORHOMES.COM](http://TIFFINMOTORHOMES.COM)

105 2ND ST NW RED BAY, AL 35582 [f](#) [i](#)



**TIFFIN**

MOTORHOMES

**LaMesa REC  
VAN**

LaMesaRV.com  
800-496-8778

©2023 Tiffin Motorhomes, Inc. Allegro®, Allegro Breeze®, Allegro RED®, Phaeton®, Allegro Bus®, Zephyr®, Wayfarer®, Roughing It Smoothly®, Open Road®, PowerGlide®, and Cahaba® are registered trademarks of Tiffin Motorhomes, Inc. All rights reserved.  
For all information concerning the limited warranty provided by Tiffin, please refer to the full written limited warranty set forth on the Tiffin website or held by our authorized dealerships. Please note, some interior furnishings not included. Date Revised: 5/16/23